

AGC Tool Box Safety Talk

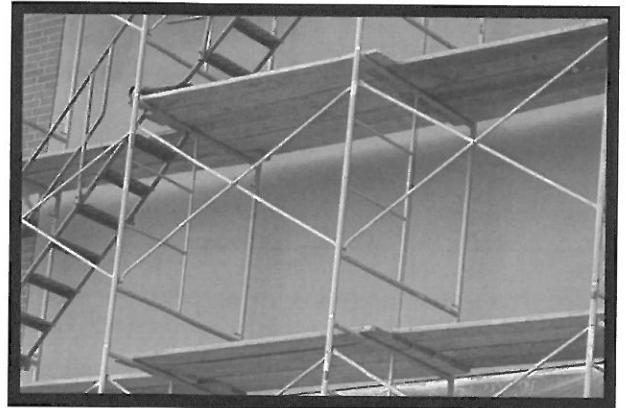
STAIRWAYS

INTRODUCTION

1. Review any accidents or “near accidents” from the past week.
2. Describe the hazards of the work as they relate to your project. Explain or show the SAFE way of doing the job.
3. Give the TOOL BOX SAFETY TALK

Slips, trips, and falls on temporary stairways are a major source of injuries and fatalities among construction workers. Since falls from upper levels account for such a high percentage of construction accidents, it's important to build railings and guard rails in conjunction with the building progress. Follow these general guidelines when building/using temporary stairways:

- Provide stairways on worksites when there is a break in elevation of 19 inches or more and no ramp, runway, embankment, or personnel hoist is available.
- Install stairways at least 30 degrees - and no more than 50 degrees - from the horizontal.
- Install handrails on stairways with four or more risers or rising more than 30 inches in height – whichever is less – along each unprotected side or edge of the stairway.
- Do not use stair pans for access until poured or filled in and guardrails and handrails have been installed.
- Keep stairways free of debris and/or projections that may cause injury or snag clothing.
- Fix slippery conditions before using stairs.
- Watch for tripping hazards at the top and bottom of stairs.



TOOL BOX SAFETY TALK – Week 45



TOPIC: STAIRWAYS

To be Completed during the week of 10/29/2012

Please Return to the Safety Department by 11/05/2012

Safety Fax: 480-726-0277
safety@huntercontracting.com

Jobsite Supervisor/ Foreman: _____

Job #: _____

Upcoming Jobsite Activities Discussed:

THA Reviewed

Reminder – Daily Stretch & Flex

Required Training Reviewed

MSDS Reviewed: _____

ATTENDANCE:

Please <u>PRINT</u> Name	Circle One		Last 4 # of SS	Please <u>PRINT</u> Name	Circle One		Last 4 # of SS
	S	H			S	H	
1.	S	H		19.	S	H	
2.	S	H		20.	S	H	
3.	S	H		21.	S	H	
4.	S	H		22.	S	H	
5.	S	H		23.	S	H	
6.	S	H		24.	S	H	
7.	S	H		25.	S	H	
8.	S	H		26.	S	H	
9.	S	H		27.	S	H	
10.	S	H		28.	S	H	
11.	S	H		29.	S	H	
12.	S	H		30.	S	H	
13.	S	H		31.	S	H	
14.	S	H		32.	S	H	
15.	S	H		33.	S	H	
16.	S	H		34.	S	H	
17.	S	H		35.	S	H	
18.	S	H		36.	S	H	

SITE SPECIFIC TOOL BOX: _____
