

AGC Tool Box Safety Talk

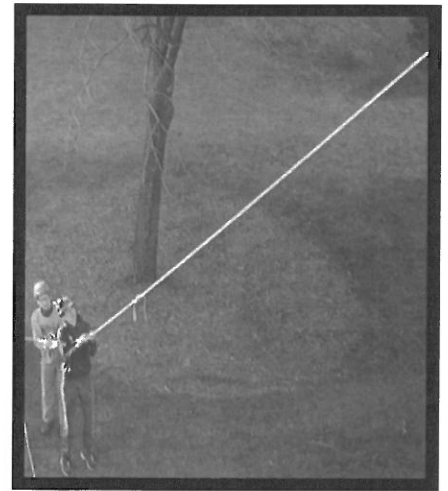
USE OF TAGLINES

INTRODUCTION

1. Review any accidents or “near accidents” from the past week.
2. Describe the hazards of the work as they relate to your project. Explain or show the SAFE way of doing the job.
3. Give the TOOL BOX SAFETY TALK

Hundreds of people are injured or killed as a result of crane accidents in the United States every year. Many accidents happen as a result of failure to control the load. To help eliminate this risk, use taglines for controlling awkward loads and maneuvering them into difficult positions. For safe use, follow these procedures:

- Use taglines to control loads when their use is practical and will not create additional hazards.
- After securing a load with taglines, stay clear of the path of the load and well forward of the load.
- If it's necessary to guide the load, stay well away from the wheels or tracks of the crane.
- When guiding a load, remain clearly visible to the crane operator at all times.
- Never walk between the suspended load and the crane.
- When working around electrical equipment or lines, make sure the tagline stays clear of the equipment or lines.



TOOL BOX SAFETY TALK – Week 44



TOPIC: USE OF TAGLINES

To be Completed during the week of 10/22/2012
Please Return to the Safety Department by 10/29/2012

Safety Fax: 480-726-0277
safety@huntercontracting.com

Jobsite Supervisor/ Foreman: _____

Job #: _____

Upcoming Jobsite Activities Discussed: _____

THA Reviewed

Reminder – Daily Stretch & Flex

Required Training Reviewed

MSDS Reviewed: _____

ATTENDANCE:

Please <u>PRINT</u> Name	Circle One		Last 4 # of SS	Please <u>PRINT</u> Name	Circle One		Last 4 # of SS
	S	H			S	H	
1.	S	H		19.	S	H	
2.	S	H		20.	S	H	
3.	S	H		21.	S	H	
4.	S	H		22.	S	H	
5.	S	H		23.	S	H	
6.	S	H		24.	S	H	
7.	S	H		25.	S	H	
8.	S	H		26.	S	H	
9.	S	H		27.	S	H	
10.	S	H		28.	S	H	
11.	S	H		29.	S	H	
12.	S	H		30.	S	H	
13.	S	H		31.	S	H	
14.	S	H		32.	S	H	
15.	S	H		33.	S	H	
16.	S	H		34.	S	H	
17.	S	H		35.	S	H	
18.	S	H		36.	S	H	

SITE SPECIFIC TOOL BOX: _____
